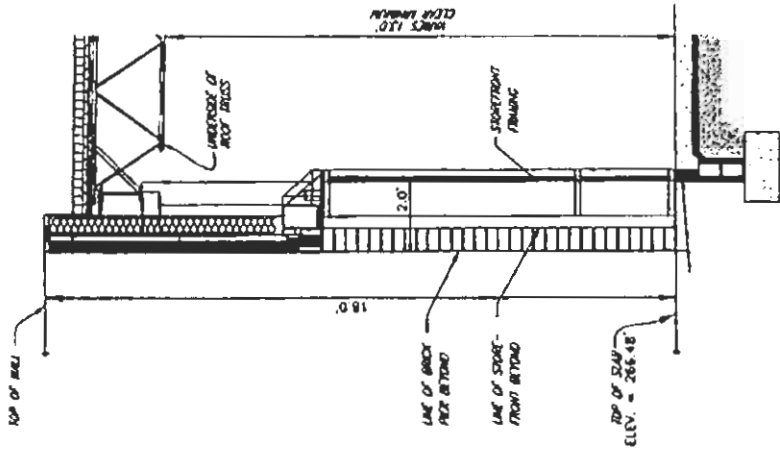
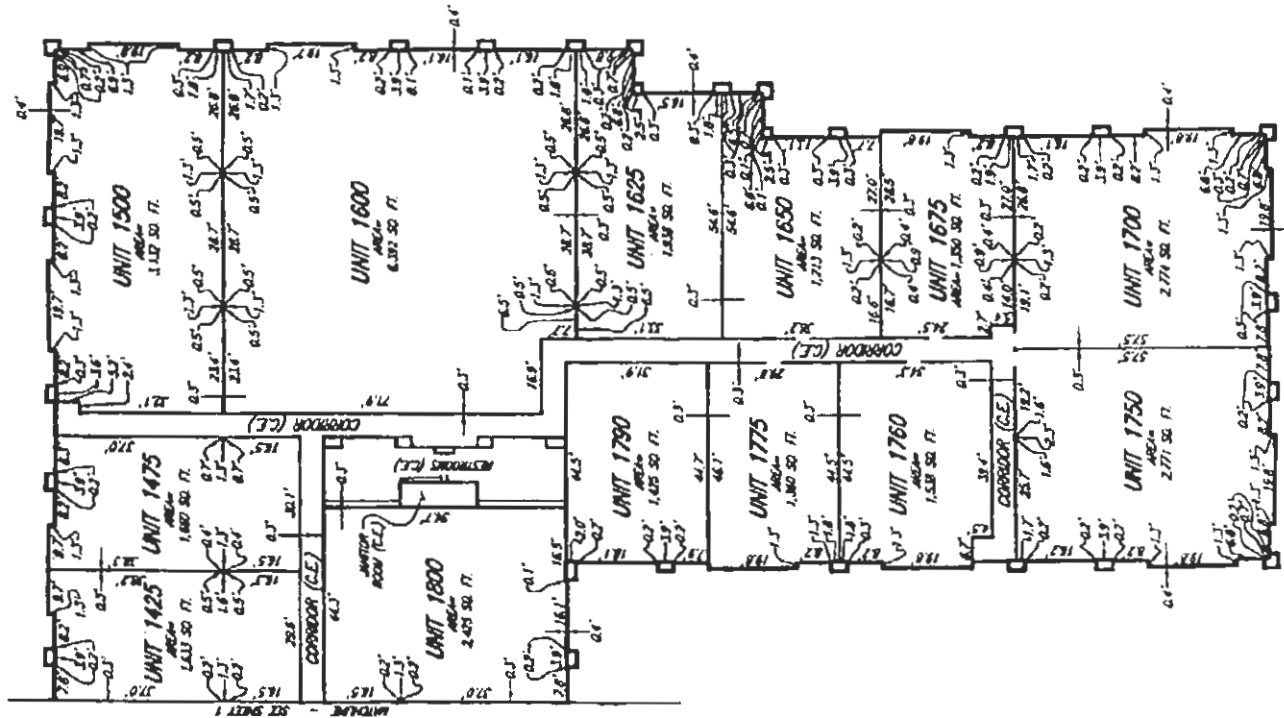
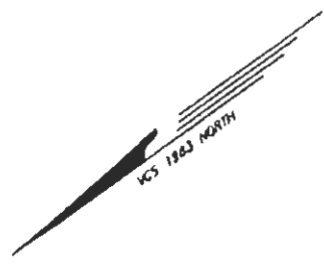
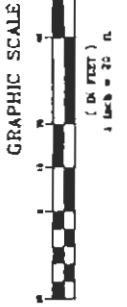


Engineering • Surveying • Land Planning • Transportation • Environmental Services  
Architectural • Mechanical • Electrical • Plumbing • Fire Protection • Structural • Interior Design • Construction Management • Real Estate • Land Use Planning • Historic Preservation • Energy • Water Resources • Wetlands • Wetland Mitigation • Wetland Delineation • Wetland Assessment • Wetland Restoration • Wetland Monitoring • Wetland Research • Wetland Education • Wetland Outreach • Wetland Advocacy • Wetland Policy • Wetland Law • Wetland Ethics • Wetland Best Practices • Wetland Innovation • Wetland Leadership • Wetland Collaboration • Wetland Partnership • Wetland Alliance • Wetland Network • Wetland Community • Wetland Organization • Wetland Association • Wetland Council • Wetland Commission • Wetland Authority • Wetland Agency • Wetland Department • Wetland Division • Wetland Office • Wetland Center • Wetland Institute • Wetland Foundation • Wetland Trust • Wetland Endowment • Wetland Fund • Wetland Grant • Wetland Award • Wetland Honor • Wetland Recognition • Wetland Distinction • Wetland Excellence • Wetland Achievement • Wetland Success • Wetland Impact • Wetland Legacy • Wetland Future • Wetland Hope • Wetland Dream • Wetland Vision • Wetland Mission • Wetland Vision • Wetland Mission • Wetland Vision • Wetland Mission



TYPICAL WALL SECTION  
NOT TO SCALE

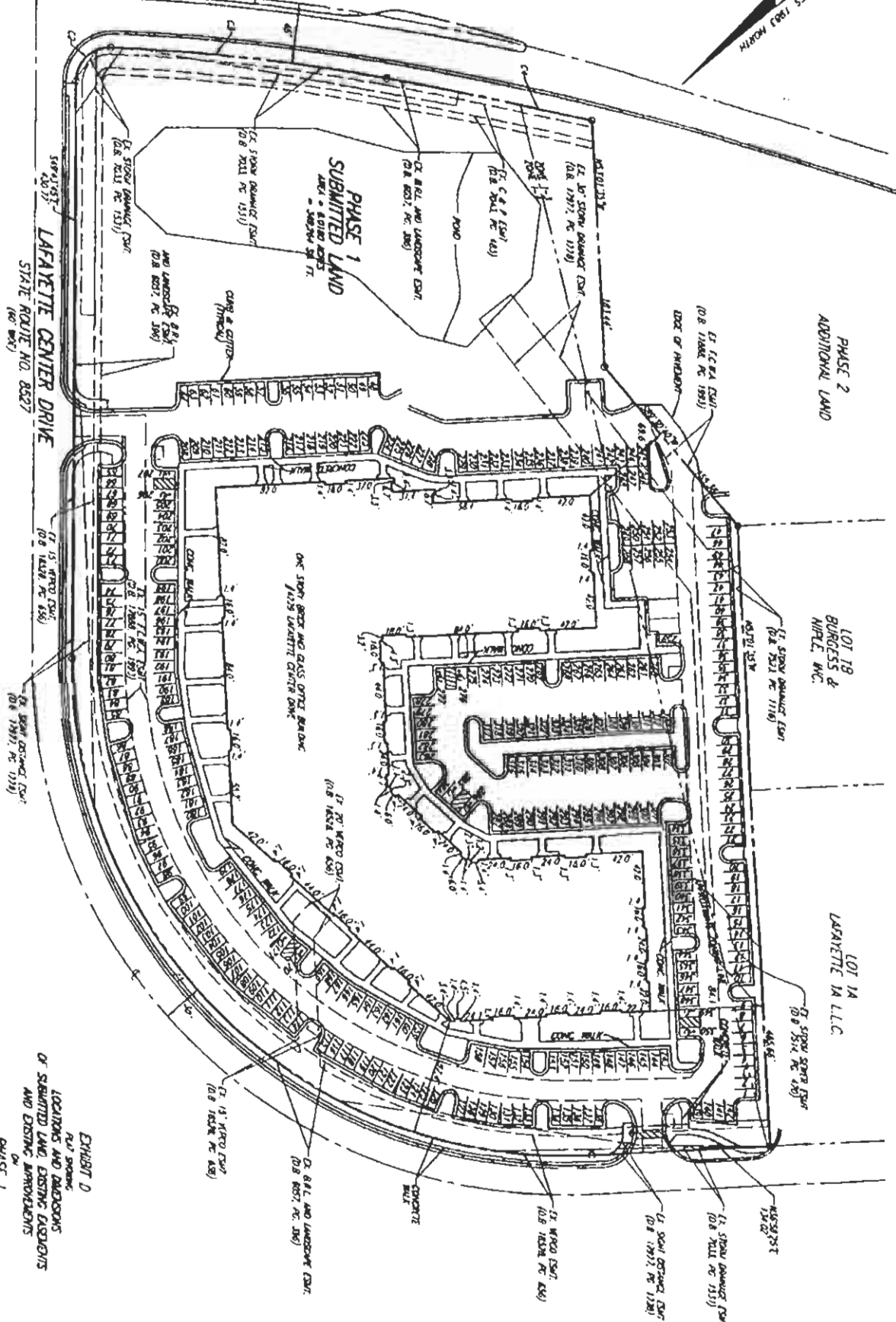
EXHIBIT 2  
PHASE 1  
LOCATIONS AND DIMENSIONS OF UNITS  
THE PONDS AT LAFAYETTE  
COMMERCIAL CONDOMINIUM  
SHELBY DISTRICT  
FAYETTE COUNTY, MICHIGAN  
SCALE: 1"=20' 4.17 18. 2008  
SHEET 7



BUILDING FLOOR PLAN

INTIMATE - SET SHEET 1

PLEASANT VALLEY ROAD  
STATE ROUTE NO. 609  
(WIDTH Varies)



GRID	ROW	LENGTH	WIDTH	AREA	PERCENT	AREA	PERCENT
C1	100.00	652.48	101.17	518.10	46.22	517.20	46.17
C2	75.00	601.17	23.17	139.19	12.51	138.84	12.47
C3	155.00	624.42	162.17	281.28	25.37	280.84	25.32
C4	100.00	55.27	28.17	158.80	14.35	158.45	14.30



**PHASE 1**  
THE PONDS AT LAFAYETTE  
COMMERCIAL CONDOMINIUM  
LOCATIONS AND DIMENSIONS  
OF SUBMITTED LAND, EXISTING EXERCISES  
AND EXISTING IMPROVEMENTS  
ON  
PHASE 1  
EXHIBIT D  
PLAN, POOLS,  
AND DIMENSIONS  
OF SUBMITTED LAND, EXISTING EXERCISES  
AND EXISTING IMPROVEMENTS

SCALE: 1"=50'  
DATE: 11/24/2008  
GRAPHIC SCALE

NOTES

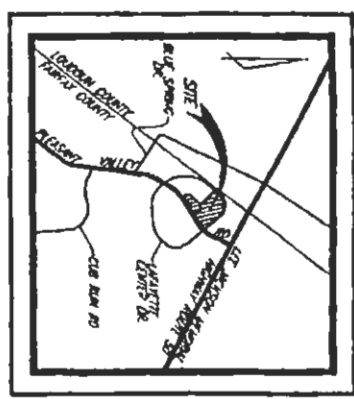
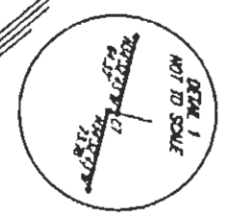
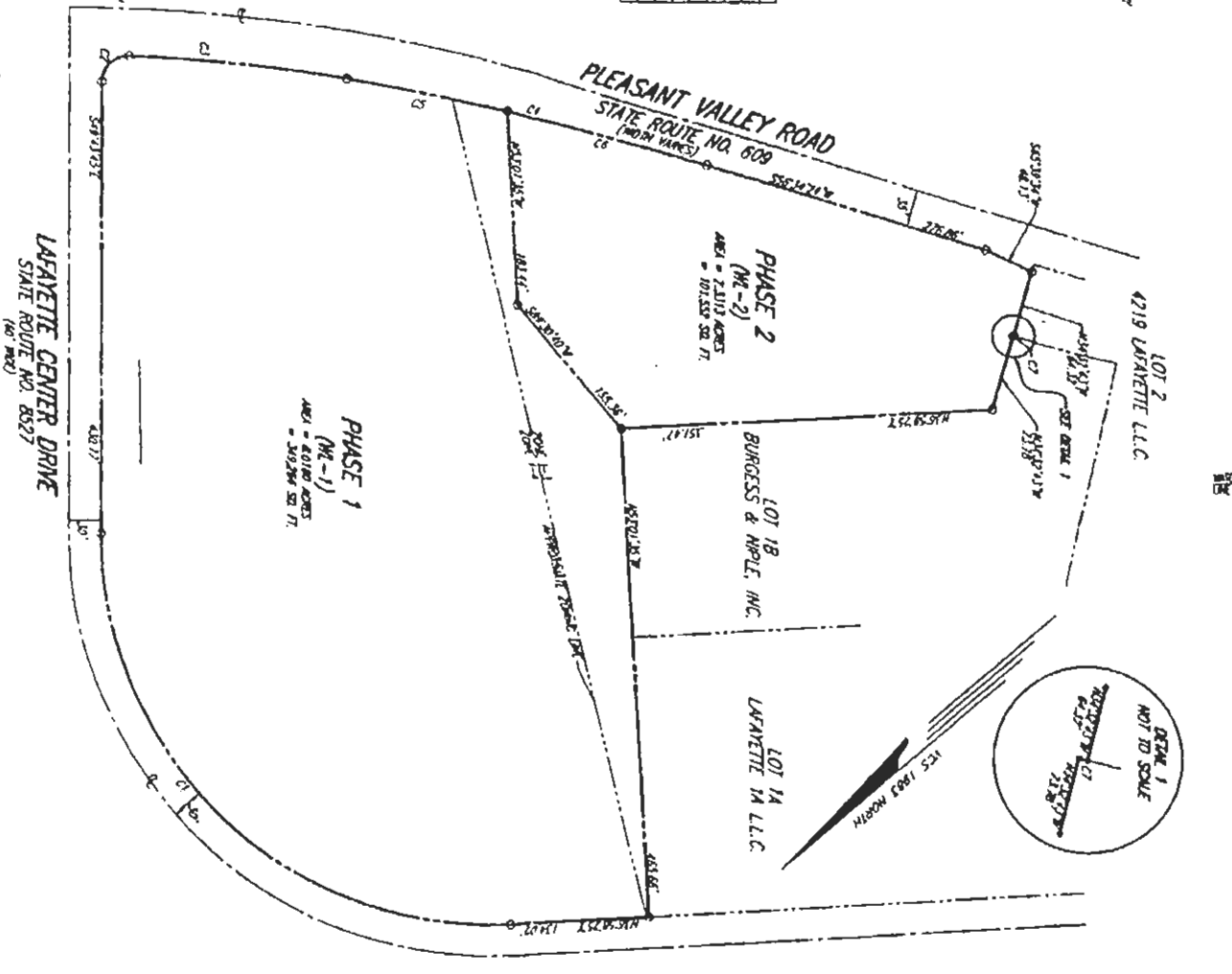
1. THE PROPERTY SHOWN HEREON IS LOCATED ON PARCEL COUNTY TAX ASSESSMENT MAP NO. 21-3-(R1) PARCELS B41 AND C-2 PARCELS 1-3 AND 1-4 AS SHOWN HEREON.
2. THIS PROPERTY IS OWNED BY COMMONWEALTH LAND DEVELOPMENT COMPANY INC. PARCEL NO. 405-0100000 BUILT 1971, 2004 AT 200 A.W.
3. BUILDING DIMENSIONS SHOWN HEREON ARE OF THE CENTER POINTS.
4. 1/2" = 20' DIMENSIONS SHOWN HEREON.
5. ALL BUILDING SPACES ARE COMMON ELEMENTS WHICH MAY BE ASSIGNED AS LIMITED COMMON ELEMENTS LATER.
6. FINANCING SPACES: FINANCING SPACES ARE 11.7' X 14.0', FINANCING SPACES ARE 17.1' X 20.2', 27.8' X 27.1', 24.1' X 24.1', 24.8' X 24.8' AND 25.0' X 24.8' ARE 4.0' X 16.0'. ALL OTHER FINANCING SPACES SHOWN ARE 8.5' X 18.0'.
7. M - DENOTES MORTGAGED LAND. CON - DENOTES CONCRETE.

DATE	NO.	DESCRIPTION	AMOUNT	DATE	DESCRIPTION	AMOUNT
1/1/00	1	CONCRETE	10,000.00	1/1/00	CONCRETE	10,000.00
1/1/00	2	CONCRETE	10,000.00	1/1/00	CONCRETE	10,000.00
1/1/00	3	CONCRETE	10,000.00	1/1/00	CONCRETE	10,000.00
1/1/00	4	CONCRETE	10,000.00	1/1/00	CONCRETE	10,000.00
1/1/00	5	CONCRETE	10,000.00	1/1/00	CONCRETE	10,000.00
1/1/00	6	CONCRETE	10,000.00	1/1/00	CONCRETE	10,000.00
1/1/00	7	CONCRETE	10,000.00	1/1/00	CONCRETE	10,000.00
1/1/00	8	CONCRETE	10,000.00	1/1/00	CONCRETE	10,000.00
1/1/00	9	CONCRETE	10,000.00	1/1/00	CONCRETE	10,000.00
1/1/00	10	CONCRETE	10,000.00	1/1/00	CONCRETE	10,000.00
1/1/00	11	CONCRETE	10,000.00	1/1/00	CONCRETE	10,000.00
1/1/00	12	CONCRETE	10,000.00	1/1/00	CONCRETE	10,000.00
1/1/00	13	CONCRETE	10,000.00	1/1/00	CONCRETE	10,000.00
1/1/00	14	CONCRETE	10,000.00	1/1/00	CONCRETE	10,000.00
1/1/00	15	CONCRETE	10,000.00	1/1/00	CONCRETE	10,000.00
1/1/00	16	CONCRETE	10,000.00	1/1/00	CONCRETE	10,000.00
1/1/00	17	CONCRETE	10,000.00	1/1/00	CONCRETE	10,000.00
1/1/00	18	CONCRETE	10,000.00	1/1/00	CONCRETE	10,000.00
1/1/00	19	CONCRETE	10,000.00	1/1/00	CONCRETE	10,000.00
1/1/00	20	CONCRETE	10,000.00	1/1/00	CONCRETE	10,000.00

STATIONER'S CERTIFICATE

I, STEPHEN W. SEAY, A duly licensed land surveyor in the Commonwealth of Virginia, do hereby certify that the plat for THE PONDS AT LASALETTE COMMERCIAL CONDOMINIUM (Labeled Section 1, Map 2) of Center City is the true and correct plat as accepted and certified with Section 5-79.36A(1) of the Virginian Code, 42.1-79.36A(1) and that the boundaries shown hereon are substantially correct.

*Steph W. Seay*  
STEPHEN W. SEAY  
LAND SURVEYOR



PHASE	AREA	ACRES
PHASE 1	36,864 SQ. FT.	0.840 ACRES
PHASE 2	101,352 SQ. FT.	2.313 ACRES
TOTAL AREA	138,216 SQ. FT.	3.153 ACRES

ENJECT D  
NOT SCALE  
LOCATIONS AND DIMENSIONS OF  
ADDITIONAL LAND AND  
WITHDRAWABLE LAND  
THE PONDS AT LASALETTE  
COMMERCIAL CONDOMINIUM  
SCALE: 1" = 40' 447 N. 2006  
GRAPHIC SCALE  
1 inch = 80 ft.  
(in feet)



*Cards Fees : 1896.52 Quarterly*

*Office 8200 Annually*

Return this portion of your bill with payment.

40528587600000410466000000000000000006

SAFARIAN ARTIN  
STERLING VA 20164-4426



Credit Card Payments	
You may pay this bill by using your Discover, Visa, MasterCard or American Express credit card. Using a touch-tone phone, dial our credit card processor at the number shown below. Then enter your Stub Number and credit card payment information. A service charge will be applied to all credit card payments. For questions call 703-222-8234.	
Credit Card Payment Telephone Number	703-
Credit Card Payment Online	<a href="http://www.fairfaxcounty.gov/cta">www.fairfaxcounty.gov/cta</a>
Stub Number	405285876
Balance Due	\$4,104.66

Include this number on your check: 0332 10 1800

Pay to: County of Fairfax  
Mail to: Department of Tax Administration  
P.O. Box 10200  
Fairfax VA 22035-0200

*Tax Amt  
Sent Annually*